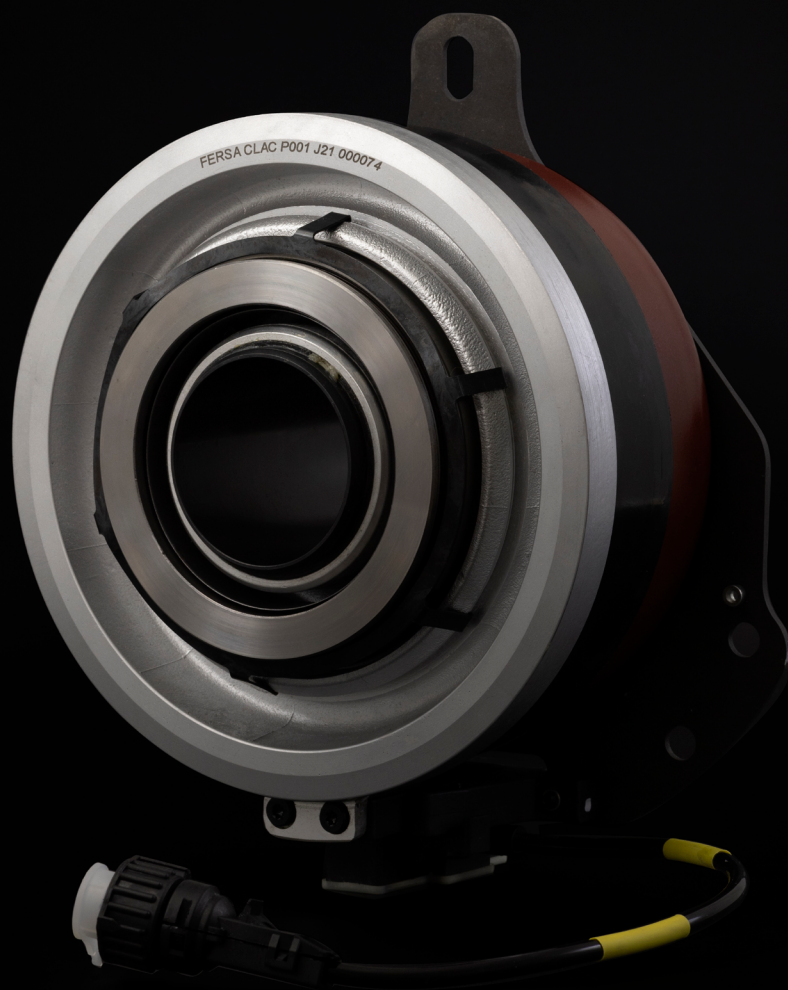


**FERSA**  
HEAVY - DUTY



# Clac Pneumatic

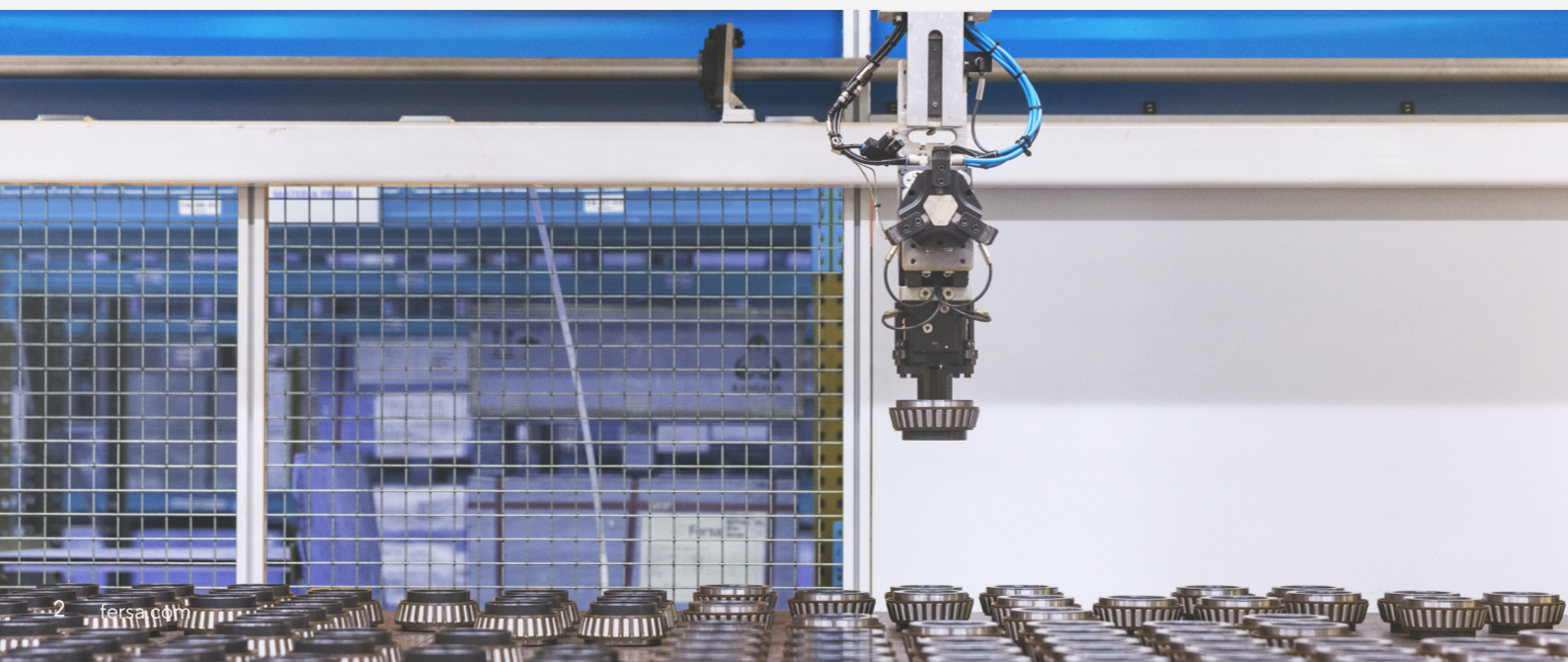
BUILT FOR DURABILITY

FERSA is the automotive division specialized in commercial vehicles of Fersa, a globally recognized group headquartered in Europe. As a leading manufacturer, Fersa specializes in producing high-quality bearings, delivering excellence and reliability to the automotive industry worldwide.

## Get to know Fersa

- **Global Innovation:** 6 manufacturing plants and 4 R&D centers drive our advanced bearing solutions.
- **OEM Quality:** Our bearings meet stringent quality standards, ensuring reliability and performance.
- **Global Reach:** Sales in over 100 countries, providing high-quality products wherever needed.
- **Cross-Selling:** Extensive product range offers significant opportunities for comprehensive solutions.
- **Rapid Development:** Synergy between PFI and Fersa ensures fast and precise development of new technologies.

We are committed to deliver innovative, efficient, and reliable bearing solutions for the automotive, heavy-duty, wind energy, railway, and agricultural industry sectors.



# Our essence

It's not what we do, it's how we do it.

Our commitment includes:

## Technical support

Expert assistance to resolve any technical issues.

## Academy on the road

Fersa Care - Technical training to mechanics.

## Immediate stock availability

Ensuring our products are readily available to meet your needs.

## Regional team service

Dedicated customer and engineering support at Brazil, USA, India, and Europe.

## In house bearing production

Automatic assembly line - Under installation.

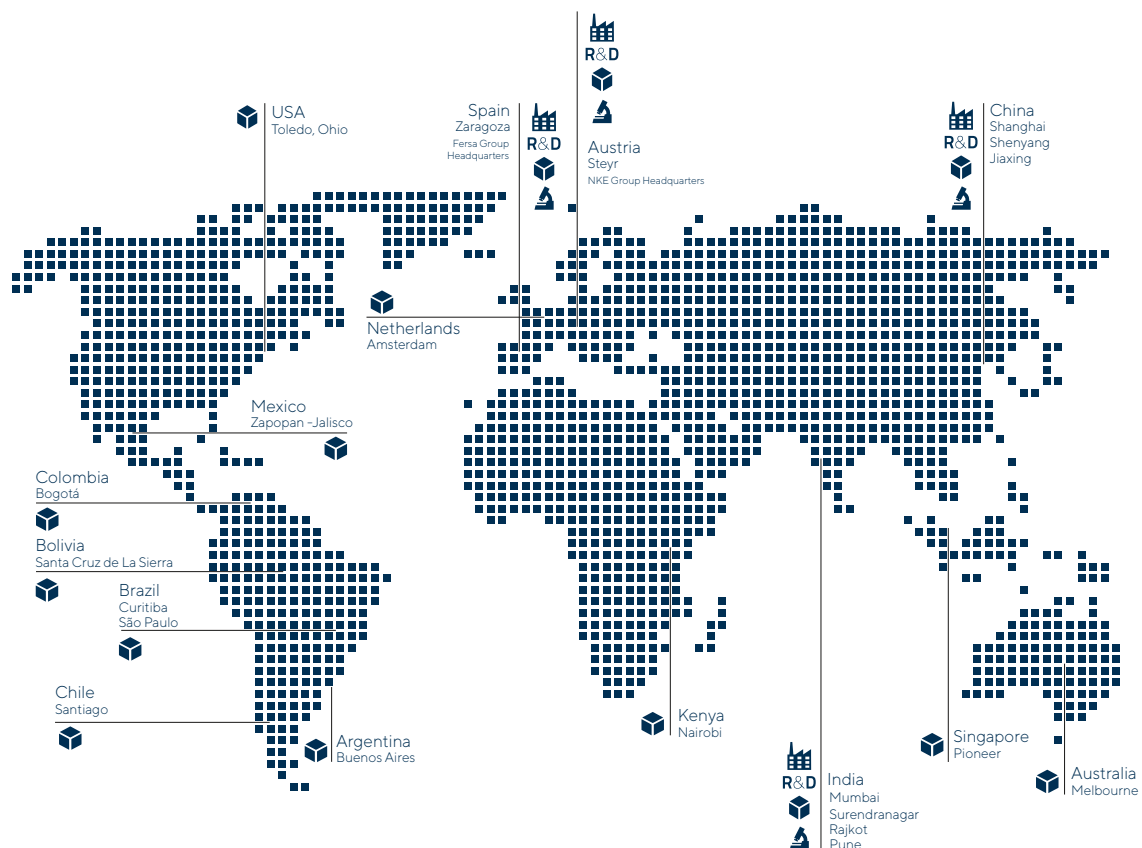
## Innovation and reliability

Extensive field testing with technical expertise. Testing facilities, R&D capabilities.

# Global presence

In the right place at the right time.

Local presence in more than 100 countries.





# Clac P features

## Maximum life guaranteed

The CLAC P series designed by Fersa, improves the performance of the product by facilitating the driving and operation of the clutch with less effort. In addition, thanks to its easy installation, it reduces assembly problems.

### Enhanced Bearing for longer life

Uses high-performance bearings designed for heavy-duty applications.

Reduces friction and wear, ensuring smooth clutch disengagement and extended vehicle life.

### High performance and durability

Built with robust materials to withstand extreme temperatures, vibrations, and contaminants.

Engineered for extreme conditions, resistant to corrosion, ensuring longevity in harsh environments.

### Extensively and intensively tested

Rigorously tested under various operating conditions to ensure performance and reliability.

Validated for high mileage and heavy load scenarios, ensuring long-term operational efficiency.

### Compact and lightweight design

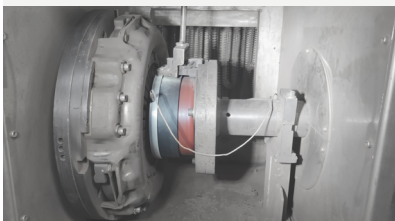
Ideal for modern compact vehicles, these bearings maintain reliability under pressure.

Easier calibration and perfect for the aftermarket with minimal maintenance requirements.

## Testing & validations

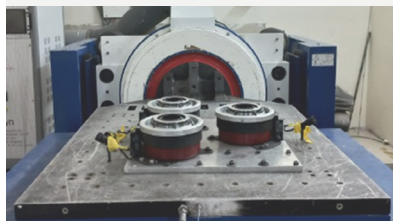
### 1 Reliability test

Endurance test. Tested for over 5 million actuations.



### 2 Performance tests

- Leak testing
- Bust test
- Hysteresis test
- Vibration test



### 3 Sensor specific tests

Tested as per Standard ISO 16750 - 4.5.





## Clac P 001

Volvo | Renault | Mack | UD Trucks

Manufacturer	Transmission	Model
Volvo	I-Shift	FMX, FH, FM, FE VNL, VNR, VHD, VAM, VM
Renault	Opti Driver	T,K,D
Mack	M-Drive	Anthem, Granite, Terra Pro
UD Trucks	Escott	Quester, Quon



## Clac P 002

Mercedes Benz | Freightliner | Western Star

Manufacturer	Transmission	Model
Mercedes Benz	Powershift 3	Actros, Arocs, Atego
Freightliner	DT 12	Cascadia IV, Cascadia V, M2 112 Plus, 114SD Plus
Western Star	DT 12	57x, 47x, 49x



## Clac P 003

MAN | DAF | Hino | Iveco | Ford

Manufacturer	Transmission	Model
MAN	TraXon	TGX, TGS
DAF	TraXon	CD, XF, XG, XG+
Hino	TraXon	700 Series
Iveco	TraXon	S-WAY, STRAUDS, TRAKKER
Ford	TraXon	F-MAX



## New developments Launch Date: Q4 2025

## Clac P 005

Mercedes Benz

Manufacturer	Transmission	Model
Mercedes Benz	G240-8	Actros, Arocs, Antos, Atego



# Successful Installations

## Clac P 001 MINING - COAL MINES



Transmission	I - Shift
Vehicle	Volvo FMX 460
Mileage Covered	100088 Km +
Calibration	Successful
Fit and function	Correct
Location	India
Status	Satisfied customer

## Clac P 002 HAULAGE - TRUCK



Transmission	DT - 12
Vehicle	Mercedes Actros
Mileage Covered	90000 Km +
Calibration	Successful
Fit and function	Correct
Location	USA
Status	Satisfied customer

## Clac P 003 HAULAGE - TRUCK



Transmission	ZF Traxon
Vehicle	DAF XF 460
Mileage Covered	50000 KM +
Calibration	Successful
Fit and function	Correct
Location	Europe
Status	Satisfied customer



# FERSA

HEAVY - DUTY



España | Austria | China | India | EEUU | Brasil | México | Colombia  
Chile | Bolivia | Argentina | Países Bajos | Australia | Kenia



[fersa.com](https://fersa.com)