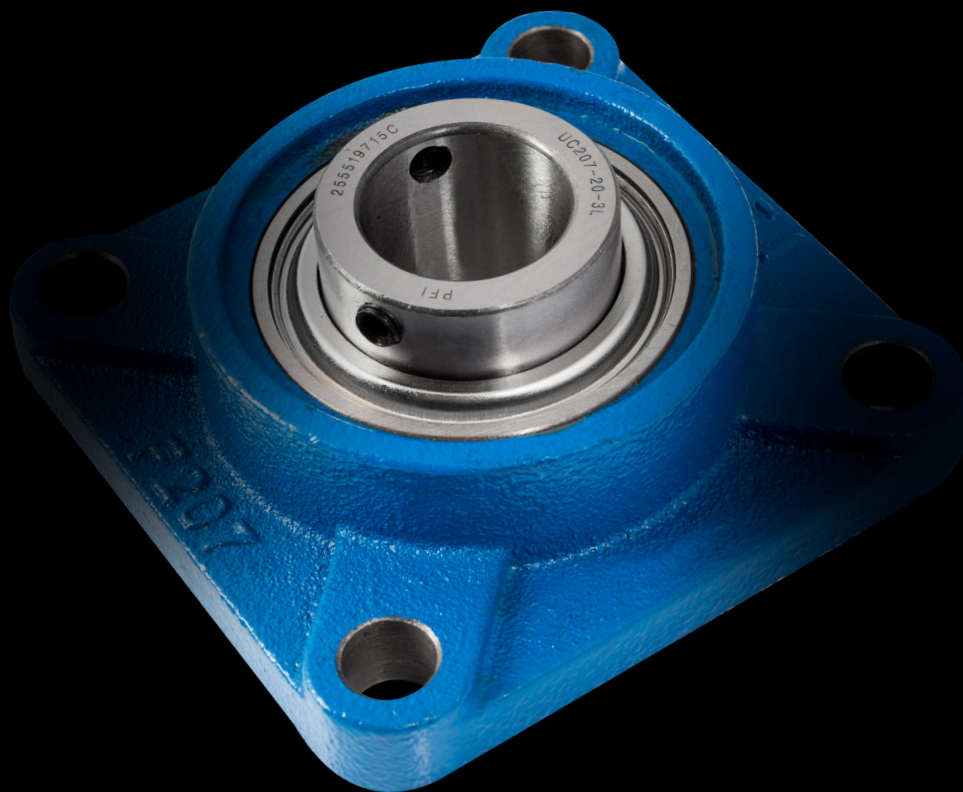


**PFI
FERSA**



Pillow Block Units & Flanged Units

AGRICULTURAL APPLICATIONS

English

pfibearings.com

PFI
FERSA

Exceptional Service

At PFI FERSA, we are dedicated to providing outstanding service to our customers. Our global presence, through our subsidiaries, ensures that we can offer localized support and quick response times.

Our commitment includes:

Technical Support

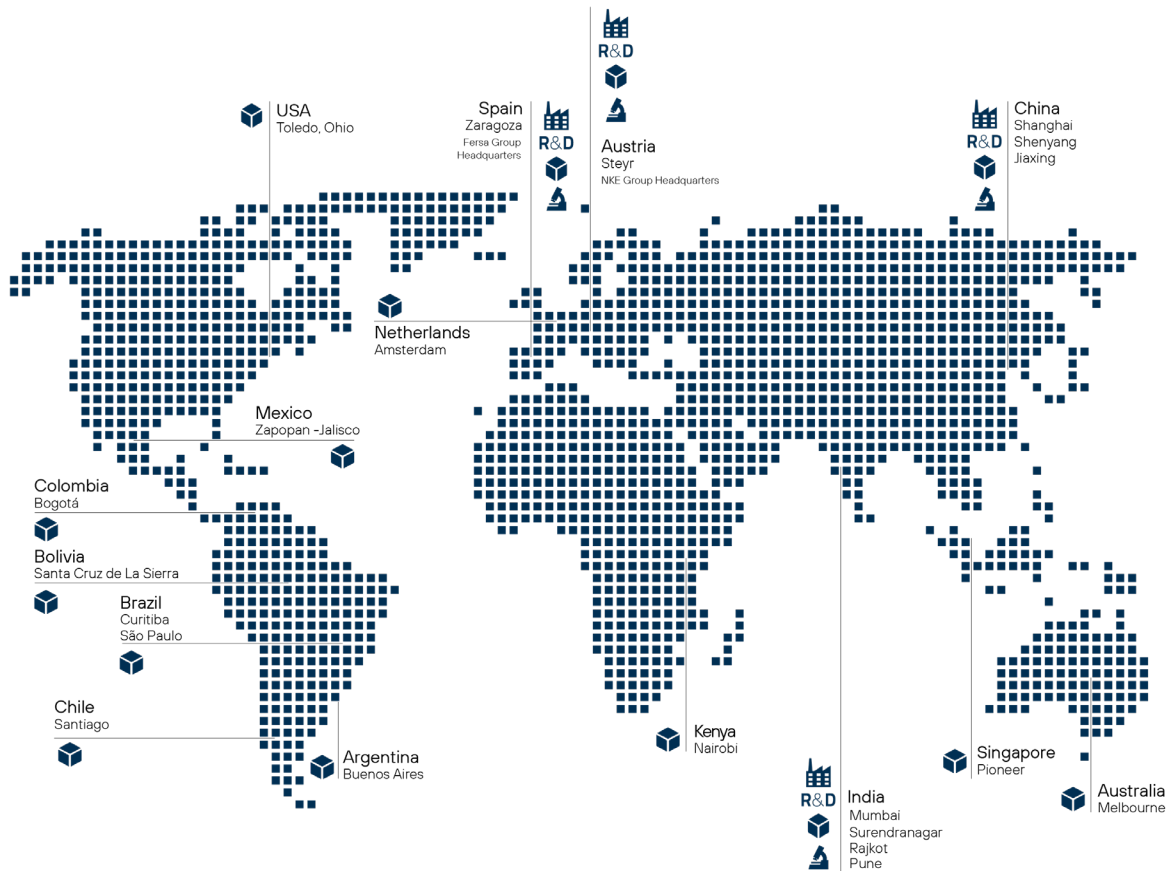
Expert assistance to resolve any technical issues.

Marketing Support

Helping our partners promote and sell our products.

Immediate Stock Availability

Ensuring our products are readily available to meet your needs.



Why PFI?

- **Group Infrastructure and R&D:** Leveraging the resources and innovation of Fersa.
- **Subsidiary Service:** Localized support from our worldwide subsidiaries.
- **End Customer Support:** Comprehensive technical and marketing assistance.
- **Immediate Stock:** Fast and reliable product availability.
- **OEM Quality:** Products that meet the highest standards of quality and performance.
- **Innovation and Reliability:** Continual investment in advanced technologies for superior products.

PFI Agri range offers advanced agricultural products that provide an unparalleled level of performance.

Our high-performance solutions are designed to eliminate the need for relubrication, saving you valuable hours required for fieldwork.

Furthermore, our seal design is far superior to conventional seal designs, providing significantly improved contamination exclusion.

Choose PFI Solutions for the most advanced agricultural products on the market.

Technical Characteristics.

Our product guarantees robustness, wear resistance, reliable operation, long service life, and contamination resistance.

In addition, we offer the option of special bearings with a superior flange, made of high-grade ductile iron to enhance the durability of our product.

Choose us for a dependable and long-lasting solution to your needs.

Applications, machines and implements



Balling and Wrapping

Combine Harvesters



Tractors

Fertilizer Spreaders



Planters

Eders



Key attributes One Lip Seal and Three Lip Seal

The PFI One Lip Seal (1L) and PFI Three Lip Seal (3L) are engineered to deliver tailored sealing solutions for various operational environments. The 1L focuses on standard protection, while the 3L offers enhanced sealing performance for demanding conditions.

	One Lip Seal	Three Lip Seal
Design & structure	Termed 1L ensures a balanced distribution of loads and provides enhanced structural stability.	Known as 3L, is meticulously crafted to solve the most difficult sealing problems. It boasts a robust design tailored to withstand the challenges of even the most abrasive and moisture-rich environments.
Seal Features	A unique component of the 1L is the one Seal. This Seal is important in locking in the lubricant, which plays a critical role in the smooth operation of the bearing. Its design offers unsurpassed protection against common contaminants like dirt, dust and abrasion, ensuring the longevity and efficiency of the bearing.	A highlight of the 3L is its molded type triple lip nitrile seal. This feature enhances the Seal's resilience against potential contaminants and ensures that it remains effective even in challenging conditions.
Seal Lip Functionality	It is meticulously designed to guarantee all contact with the O.D. (outer diameter) of the inner ring. This complete contact ensures that contaminants are kept at bay; especially suitable for dirty applications, the bearings can efficiently operate at moderate speeds, approximately 3,000rpm	The three seals' lips play a vital role in protecting the bearing. It acts as a shield against contaminants like dirt, dust, fiber wrap and abrasion. This is further complemented by the three lip seals on each side, which consist of three positive contact rubberized fabric seals, offering multiple layers of protection.
Longevity & Performance	<p>With an impressive bench test operation time of 250 hours in a moderate environment, these bearings demonstrate resilience and durability, particularly in agricultural applications.</p> <p><i>Note: Based on a test of 250 hours in a moderate environment, the PFI bearing is designed to last an entire season without requiring mid-season maintenance.</i></p>	<p>With a design optimized for performance, the seals demonstrate superior functionality in applications operating at slow speeds and even in the harshest environments. Notably, when compared to a one-lip seal, its efficacy is evident but at speeds around 1,000 rpm. It boasts an impressive 250 hours of operation in a sludge environment test, further affirming its resilience.</p> <p><i>Note: Based on a test of 250 hours in a sludge environment, the PFI bearing is designed to last an entire season without requiring mid-season maintenance.</i></p>
Operating Environment	Ideally suited for a less contaminative environment, the 1L bearing is resilient against indirect contamination. This includes threats like dust and light to moderate water exposure.	The 3L Seal is versatile and can function in direct scenarios like ground and crop contact, as well as in conditions with moisture exposure. Its design is suited for operations with light direct contamination, especially when it's at a distance of one foot from the ground. Additionally, it's adept for applications like tillage, where there's direct ground contact and moisture exposure.
Contamination Exclusion	It is designed to exclude mild to moderate contaminants, ensuring that the bearing remains free from unnecessary wear and tear, thus prolonging its lifespan. Typical application: Lawn and Garden Applications, combine power transmission, Idler sprockets, conveyor rollers, combine, baler drive rolls	The Seal is apt for typical applications such as Planters (press wheel, gauge wheel), Disc harrow and rolling basket relubricate, baler idler rolls and augers with direct crop contact. It's also well-suited for Rolling basket maintenance-free tillage, Disc harrow maintenance-free tillage trunnion units, pillow block and HUB units. Its design permits the bearing to operate efficiently in environments characterized by high pollution and abrasion, albeit at low speeds.
Contact Dynamics	A slight contact with the bearing's inner surface is meticulously calibrated to provide the right level of protection, especially during high-speed operations. This slight contact ensures that the bearing remains stable and operates without hitches.	The Seal is tailored to function in conditions with very high relative humidity. This makes it a reliable choice for applications exposed to moisture-intensive environments.

UCF Flanged Units

Cast iron housing - radial insert bearing grub screws in inner ring

The UCF Series Agri Bearings Unit, manufactured by PFI Bearings, is a specialized bearing unit designed for agricultural machinery and equipment. It is specifically engineered to support rotating shafts in demanding agricultural environments, providing reliable performance and extended service life.

Features

The UCF series bearings unit consists of a cast iron housing with a mounting flange and a radial insert ball bearing. The cast iron housing offers excellent strength and durability, ensuring resistance to heavy loads, impacts, and harsh agricultural conditions.

This series features a spherical outer surface on the housing, allowing for easy alignment and accommodation of shaft misalignments. This design promotes efficient power transmission, reduces friction, and minimizes wear, enhancing the overall performance and longevity of agricultural equipment.



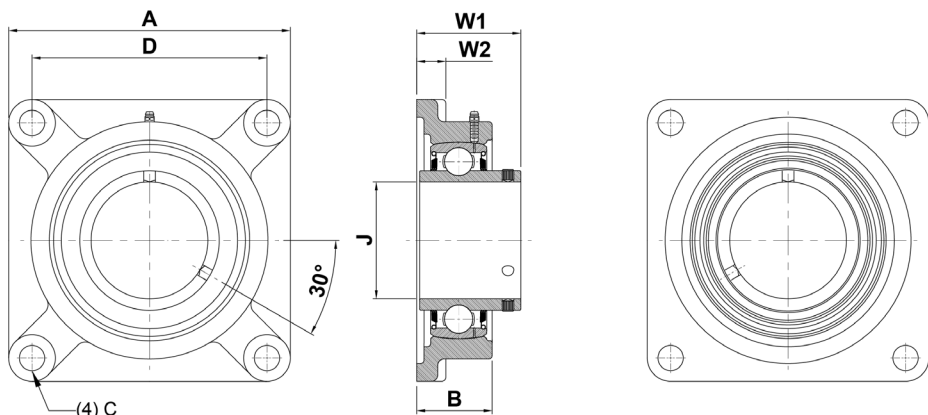
Applications

With its robust construction, corrosion resistance, and ease of installation, the UCF series agri bearings unit is widely used in various agricultural applications such as irrigation systems, grain handling equipment, conveyors, and other farm machinery.

PFI Bearings' UCF series agri bearings unit is engineered to meet the unique requirements of the agricultural industry, providing reliable and durable performance in the field. Trust PFI Bearings for top-quality solutions that optimize the productivity and efficiency of your agricultural machinery.

PFS TDT Flanges units									
PFI P/N	ID 1	OD	W1	Relubricable	Metric system	Qty Ind. Box	OEM	Competitors	
PFS212 TDT.H	60,00	205,00	73,70	Yes	mm	1	HORSCH 0240187, HORSCH 95110360, HORSCH 96080209	FKL LESQFS212TDTH, POLNOC PN00063	

BUCF Flanges units									
PFI P/N	ID 1	OD	W1	Relubricable	Metric system	Qty Ind. Box	Competitors		
BUCF207-20-3L	31,75	117,00	44,40	Yes	inch	10	SKF UCF 207-20, SNR UCF.207-20		



UCF Flanges units								
PFI P/N	ID 1	OD	W1	Relubricable	Metric system	Notes	Qty Ind. Box	Competitors
UCF203-3L	17,00	86,00	33,30	Yes	mm	Cast Iron Housing	10	TIMKEN UCF203, SNR UCF203, INA UCF203
UCF204-12-3L	19,05	86,00	31,00	Yes	inch	Cast Iron Housing	10	SKF UCF 204-12, TIMKEN UCF20412, NTN UC-F204012D1, INA UCF20412
UCF204-12	19,05	86,00	33,30	Yes	inch	Cast Iron Housing / Housing Color Pantone	10	-
UCF204	20,00	86,00	33,30	Yes	mm	Cast Iron Housing	10	-
UCF205-14-3L	22,23	95,00	34,10	Yes	inch	Cast Iron Housing	10	TIMKEN UCF20514, SKF UCF 205-14, SNR UCF20514, INA UCF20514
UCF205-15-3L	23,81	95,00	35,80	Yes	inch	Cast Iron Housing	10	SKF UCF 205-15, TIMKEN UCF20515, SNR UCF20515, INA UCF20515
UCF205	25,00	95,00	35,80	Yes	mm	Cast Iron Housing	10	-
UCF205-3L	25,00	95,00	35,80	Yes	mm	Cast Iron Housing	10	SKF FYJ25TF, TIMKEN UCF205, SKF UCF 205/H, SNR UCF205, INA UCF205
UCF205-16	25,40	95,00	35,80	Yes	inch	Cast Iron Housing	10	-
UCF205-16-3L	25,40	95,00	35,80	Yes	inch	Cast Iron Housing	10	SKF RCJ1, SKF UCF 205-16, TIMKEN UCF20516
UCF206-18-3L	28,58	108,00	40,20	Yes	inch	Cast Iron Housing	10	SKF RCJ118, SKF UCF 206-18, TIMKEN UCF20618
UCF206	30,00	108,00	40,20	Yes	mm	Cast Iron Housing	10	-
UCF206-3L	30,00	108,00	40,20	Yes	mm	Cast Iron Housing	10	TIMKEN UCF206, SKF UCF 206/H, SNR UCF206, INA UCF206
UCF206-20	31,75	108,00	40,20	Yes	inch	Cast Iron Housing	10	-
UCF206-20-3L	31,75	108,00	40,20	Yes	inch	Cast Iron Housing	10	TIMKEN UCF20620, SNR UCF20620
UCF207-20	31,75	117,00	44,40	Yes	inch	Cast Iron Housing	10	-
UCF207-20-3L	31,75	117,00	44,40	Yes	inch	Cast Iron Housing	10	SKF RCJ114, TIMKEN UCF20720, SKF UCF 207-20
UCF207-21-3L	33,34	117,00	44,40	Yes	inch	Cast Iron Housing	10	TIMKEN UCF20721, SNR UCF20721, INA UCF20721
UCF207-22-3L	34,93	117,00	44,40	Yes	inch	Cast Iron Housing	10	SKF RCJ138, SKF UCF 207-22, TIMKEN UCF20722
UCF207	35,00	117,00	44,40	Yes	mm	Cast Iron Housing	10	-
UCF207-3L	35,00	117,00	44,40	Yes	mm	Cast Iron Housing	10	TIMKEN UCF207, SKF UCF 207/H, SNR UCF207, INA UCF207
UCF207-23-3L	36,51	117,00	44,40	Yes	inch	Cast Iron Housing	10	SKF RCJ1716, TIMKEN UCF20723, SKF UCF 207-23
UCF208-24	38,10	130,00	51,20	Yes	inch	Cast Iron Housing	4	-
UCF208-24-3L	38,10	130,00	51,20	Yes	inch	Cast Iron Housing	4	SKF RCJ112, TIMKEN UCF20824, SKF UCF 208-24
UCF208-24-3L SG	38,10	130,00	51,20	Yes	inch	Iron Housing	4	-
UCF208	40,00	130,00	51,20	Yes	mm	Cast Iron Housing	4	-
UCF208-3L	40,00	130,00	51,20	Yes	mm	Cast Iron Housing	4	TIMKEN UCF208, SKF UCF 208/H, SNR UCF208, INA UCF208
UCF209-28	44,45	137,00	52,20	Yes	inch	Cast Iron Housing	4	-
UCF209-28-3L	44,45	137,00	52,20	Yes	inch	Cast Iron Housing	4	SKF RCJ134, TIMKEN UCF20928, SKF UCF 209-28
UCF209	45,00	137,00	52,20	Yes	mm	Cast Iron Housing	4	-
UCF209-3L	45,00	137,00	52,20	Yes	mm	Cast Iron Housing	4	TIMKEN UCF209, SKF UCF 209/H, SNR UCF209, INA UCF209
UCF210	50,00	143,00	54,60	Yes	mm	Cast Iron Housing	4	-
UCF210-3L	50,00	143,00	54,60	Yes	mm	Cast Iron Housing	4	TIMKEN UCF210, SKF UCF 210/H, SNR UCF210, INA UCF210
UCF210-3L SG	50,00	143,00	54,60	Yes	mm	Iron Housing	4	-
UCF210-32-3L	50,80	143,00	54,60	Yes	inch	Cast Iron Housing	4	TIMKEN UCF21032, SNR UCF21032
UCF211-32	50,80	163,00	58,40	Yes	inch	Cast Iron Housing	2	-
UCF211-32-3L	50,80	163,00	58,40	Yes	inch	Cast Iron Housing	2	SKF RCJ2, TIMKEN UCF21132, SKF UCF 211-32
UCF211-3L	55,00	163,00	58,40	Yes	mm	Cast Iron Housing	2	TIMKEN UCF211, SKF UCF 211/H, SNR UCF211, INA UCF211
UCF212-3L	60,00	175,00	68,70	Yes	mm	Cast Iron Housing	2	TIMKEN UCF212, SKF UCF 212/H, SNR UCF212, INA UCF212
UCF213-40	63,50	187,00	69,70	Yes	inch	Cast Iron Housing	2	-
UCF215-48	76,20	200,00	78,50	Yes	inch	Cast Iron Housing	2	-

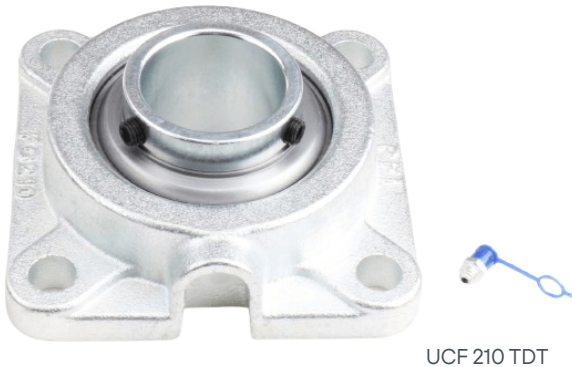
Note:
SG = ductile iron to flanges (Spheroidal Graphite Iron)

PFI Agri TDT range offers advanced agricultural products that provide an unparalleled level of performance. Our high-performance solutions are designed to eliminate the need for relubrication, saving you valuable hours required for fieldwork. Furthermore, our seal design with a reinforced cover seal is far superior to conventional seal designs, providing significantly improved contamination exclusion. Choose PFI Solutions for the most advanced agricultural products on the market.

UCF TDT Flanges units - TDT version 3-lip seals on both sides with reinforced cover seal							
PFI P/N	ID 1	OD	W1	Relubricable	Metric system	Qty Ind. Box	Competitors
UCF207 TDT	35,00	118,00	44,40	Yes	mm	10	FKL LEFG 207 TDT
UCF208 TDT	40,00	230,00	51,20	Yes	mm	4	FKL LEFG 208 TDT
UCF209 TDT	45,00	105,00	52,20	Yes	mm	4	FKL LEFG 209 TDT
UCF210 TDT	50,00	111,00	54,60	Yes	mm	4	FKL LEFG 210 TDT
UCF211 TDT	55,00	100,00	55,60	Yes	mm	2	FKL LEFG 211 TDT
UCF212 TDT	60,00	143,00	68,50	Yes	mm	2	FKL LEFG 212 TDT

Technical Characteristics

Our product guarantees robustness, wear resistance, reliable operation, long service life and contamination resistance. In addition, we offer the option of special bearings with a superior flange, made of high-grade ductile iron to enhance the durability of our product. Choose us for a dependable and long-lasting solution to your needs.



UCF 210 TDT

Seal technical comments

High-Performance Sealing - 3-lip seals on both sides with reinforced cover seal. The PFI 3-Lip Seal - 3L for high performance is a top-tier solution in sealing technology, offering multi-layered protection, contaminant resilience versatile application suitability for prolonged and optimal performance.

Recommended working conditions:

Load and speed	Ensure the operating conditions (load, speed, vibration) are within the bearing's specified dynamic and static load ratings.
Environment	Flanged bearings are designed to resist water and contaminants, making them suitable for robust applications.
Temperature	Operate within the recommended temperature range, as excessive heat can degrade the bearing material and lubricant.
Maintenance	Regularly inspect the bearings for wear and tear and replace them to prevent failure.
Material Suitability	Consider the flange material (cast iron ductile) based on the application's environmental exposure, such as chemicals or washdowns.

UCFC Flanges units								
FERSA P/n	ID 1	OD	W1	Relubricable	Metric system	Qty Ind. Box	OEM	Competitors
UCFC232812	35,00	125,00	40,00	No	mm	4	LEMKEN 3199372	INA F-232812, POLNOC PN 00032, INA RCJ 35X118X39.9, FKL Å LSGR 207 TBS

UCFL Flanges units - Oval 2-bolt flange								
PFI P/N	ID 1	OD	W1	Relubricable	Metric system	Qty Ind. Box	OEM	Competitors
UCFL201	12,00	113,00	33,30	Yes	mm	-	-	-
UCFL202	15,00	113,00	33,30	Yes	mm	-	-	-
UCFL203	17,00	113,00	33,30	Yes	mm	4	-	-
UCFL204	20,00	113,00	33,30	Yes	mm	4	-	-
UCFL205	25,00	130,00	35,80	Yes	mm	5	-	-
UCFL206	30,00	148,00	40,20	Yes	mm	3	-	-
UCFL207	35,00	161,00	44,40	Yes	mm	4	-	-
UCFL208	40,00	175,00	51,20	Yes	mm	3	-	-
UCFL208X6	40,00	176,00	41,00	Yes	mm	3	KOCKERLING 567148, KOCKERLING 567248	FKL LSNN208TDTHTK, POLNOC PN00051
UCFL209	45,00	188,00	52,20	Yes	mm	-	-	-
UCFL210	50,00	197,00	54,60	Yes	mm	-	-	-
UCFL211	55,00	224,00	58,40	Yes	mm	-	-	-
UCFL212	60,00	250,00	68,70	Yes	mm	-	-	-
UCFL213	65,00	258,00	69,70	Yes	mm	-	-	-
UCFL214	70,00	265,00	75,40	Yes	mm	-	-	-



Mounting instructions for Flanged unit bearings:

Preparation

Ensure the mounting surface is clean and flat, as a precise ground surface is crucial for the bearing axis.

Alignment

Position the bearing correctly with the shaft to ensure it is perpendicular to the mounting surface.

Attachment

Use appropriate bolts or studs with washers to secure the flanged unit to the machine wall or frame.

Tightening

Apply the recommended torque values to avoid under-tightening (which may lead to misalignment), or over-tightening (which could cause deformation).

Sealing

Check the seals and rubber grommets for integrity, to reduce noise, vibration, and contamination ingress.

UCP Pillow Block Units

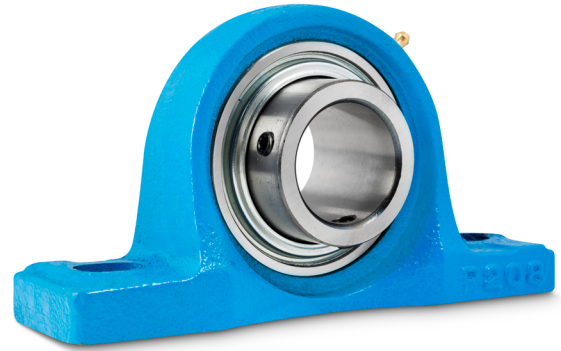
Cast iron housing - radial insert bearing grub screws in inner ring

The UCP Series Agri Bearings Unit, manufactured by PFI Bearings, is a specialized bearing unit designed specifically for agricultural machinery and equipment. It is engineered to provide reliable support and smooth operation for rotating shafts in the demanding agricultural environments.

Features

It features a cast iron housing with a pillow block design. The cast iron housing provides exceptional strength, durability, and resistance to heavy loads, impacts, and harsh agricultural conditions.

The UCP series agri bearings unit includes a radial insert ball bearing, which is securely mounted within the housing. This configuration allows for easy installation, alignment, and replacement of the bearing. The pillow block design offers stability and allows for efficient power transmission, reducing friction and wear on the rotating shaft.

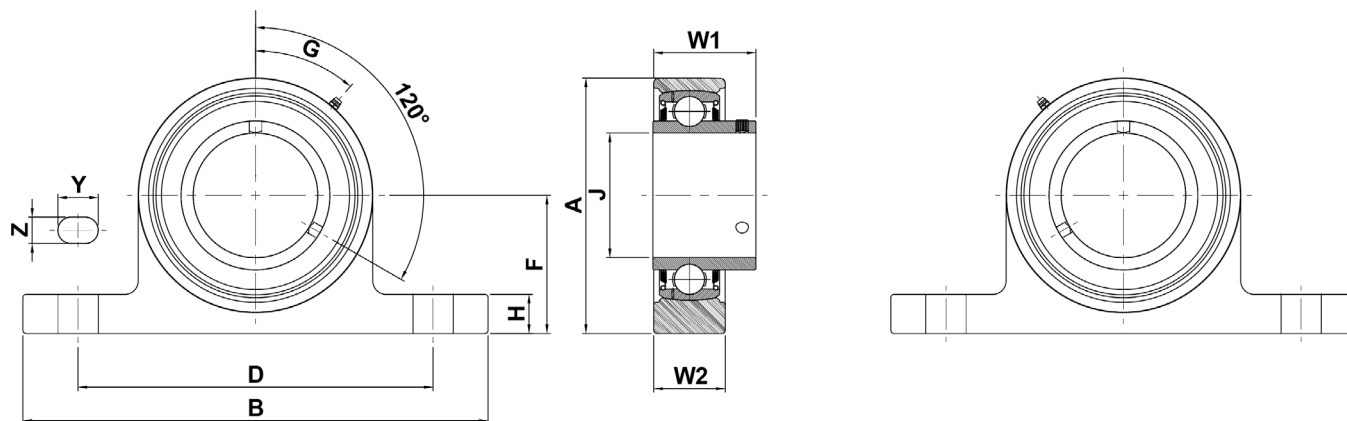


Applications

This pillow block units are commonly used in various agricultural applications, including pumps, augers, feeders, and other farm machinery. It ensures reliable performance, reduced downtime, and increased productivity in the agricultural sector.

PFI P/N	ID 1	OD	W1	Relubricable	Metric system	Qty Ind. Box	Competitors
UCP201	12,00	62,00	38,00	Yes	mm	-	-
UCP202	15,00	62,00	38,00	Yes	mm	-	-
UCP203	17,00	62,00	38,00	Yes	mm	-	-
UCP204-12	19,05	65,00	38,00	Yes	inch	-	TIMKEN UCP20412, NSK UCP20412D1, NSK UCP20412S
UCP204	20,00	65,00	38,00	Yes	mm	5	-
UCP204-3L	20,00	65,00	38,00	Yes	mm	5	FAFNIR RASC20, TIMKEN UCP204, SKF UCP 204/H
UCP205-14	22,23	70,00	38,00	Yes	inch	-	TIMKEN UCP20514, NSK UCP20514D1, NSK UCP20514S
UCP205-15	23,81	70,00	38,00	Yes	inch	-	TIMKEN UCP20515, NSK UCP20515D1, NSK UCP20515S
UCP205-3L	25,00	70,00	38,00	Yes	mm	5	FAFNIR RASC25, TIMKEN UCP205, SKF UCP 205/H
UCP205	25,00	71,00	38,00	Yes	mm	5	-
UCP205-16-3L	25,40	70,00	38,00	Yes	inch	5	SKF RAS1, SKF UCP 205-16, TIMKEN UCP20516, NSK UCP20516D1
UCP205-16	25,40	140,00	71,00	Yes	inch	5	-
UCP206-18	28,58	83,00	48,00	Yes	inch	-	TIMKEN UCP20618, NSK UCP20618D1
UCP206	30,00	83,00	48,00	Yes	mm	-	-
UCP206-3L	30,00	83,00	48,00	Yes	mm	3	FAFNIR RASC30, TIMKEN UCP206, SKF UCP 206/H
UCP206-20	31,75	83,00	48,00	Yes	inch	-	TIMKEN UCP20620, NSK UCP20620D1
UCP207-20	31,75	93,00	48,00	Yes	inch	3	TIMKEN UCP20720, NSK UCP20720D1

PFI P/N	ID 1	OD	W1	Relubricable	Metric system	Qty Ind. Box	Competitors
UCP206-21	33,34	83,00	48,00	Yes	inch	-	TIMKEN UCP20621, NSK UCP20621D1
UCP207-21	33,34	93,00	48,00	Yes	inch	-	TIMKEN UCP20721, NSK UCP20721D1
UCP206-22	34,93	83,00	48,00	Yes	inch	-	TIMKEN UCP20622, NSK UCP20622D1
UCP207-22	34,93	93,00	48,00	Yes	inch	-	TIMKEN UCP20722, NSK UCP20722D1,
UCP207	35,00	93,00	48,00	Yes	mm	3	-
UCP207-3L	35,00	93,00	48,00	Yes	mm	3	FAFNIR RASC35, TIMKEN UCP207, SKF UCP 207/H
UCP206-23	35,51	83,00	48,00	Yes	inch	-	TIMKEN UCP20623, NSK UCP20623D1
UCP207-23	36,51	93,00	48,00	Yes	inch	-	TIMKEN UCP20723, NSK UCP20723D1
UCP208-24-3L	38,10	98,00	54,00	Yes	inch	3	SKF RAS112, SKF UCP 208-24, TIMKEN UCP20824, NSK UCP20824D1
UCP208-24	38,10	184,00	98,00	Yes	inch	3	-
UCP208	40,00	98,00	54,00	Yes	mm	3	-
UCP208-3L	40,00	98,00	54,00	Yes	mm	3	FAFNIR RASC40, TIMKEN UCP208, SKF UCP 208/H
UCP209-28-3L	44,45	106,00	54,00	Yes	inch	3	SKF UCP 209-28, TIMKEN UCP20928, SNR UCP20928
UCP209-28	44,45	190,00	106,00	Yes	inch	3	-
UCP209	45,00	106,00	54,00	Yes	mm	3	-
UCP209-3L	45,00	106,00	54,00	Yes	mm	3	FAFNIR RASC45, TIMKEN UCP209, SKF UCP 209/H
UCP210-3L	50,00	113,00	60,00	Yes	mm	3	FAFNIR RASC50, TIMKEN UCP210, SKF UCP 210/H
UCP210	50,00	114,00	60,00	Yes	mm	3	-
UCP210-32	50,80	114,00	60,00	Yes	inch	-	TIMKEN UCP21032, NSK UCP21032D1, NSK UCP21032S
UCP211-32-3L	50,80	126,00	60,00	Yes	inch	4	SKF UCP 211-32, TIMKEN UCP21132, NSK UCP21132D1, NSK UCP21132S
UCP211-32	50,80	219,00	126,00	Yes	inch	4	-
UCP211	55,00	126,00	60,00	Yes	mm	-	-
UCP211-3L	55,00	126,00	60,00	Yes	mm	4	FAFNIR RASC55, TIMKEN UCP211, SKF UCP 211/H
UCP212	60,00	138,00	70,00	Yes	mm	2	-
UCP212-3L	60,00	138,00	70,00	Yes	mm	2	FAFNIR RASC60, TIMKEN UCP212, SKF UCP 212/H
UCP213	65,00	151,00	70,00	Yes	mm	-	-
UCP213-3L	65,00	151,00	70,00	Yes	mm	2	FAFNIR RASC65, TIMKEN UCP213, SKF UCP 213/H
UCP214	70,00	157,00	72,00	Yes	mm	-	-



PFI P/N	ID 1	OD	W1	Relubricable	Metric system	Qty Ind. Box	Competitors
UC 205 FS	25,00	99,00	43,00	No	mm	10	INA F-239975-0200, POLNOC PN00029, FKL LSGR 205 FS

PFI FERSA

Spain | Austria | China | India | USA | Brazil | Mexico | Colombia
Chile | Bolivia | Argentina | Netherlands | Australia | Kenya



pfibearings.com